

FOR LEASE // 108 MILL PLAIN ROAD, DANBURY CT



PROPERTY DESCRIPTION

Beautiful office space in Danbury's booming Westside. Large private offices, open work area, conference room, oversized windows in elevator building! Professional building ideal for accountants, attorneys, R&D or any professional use. Easy access to I-84 and 684.

FULL COMMISSION TO LEASING AGENT

PROPERTY HIGHLIGHTS

- Year Built: 1982
- Zone: CA80
- Heating: Gas Heat
- Cooling: Central A/C
- Utilities: City Water, Sewer, and Gas
- Second Floor With Elevator
- Ample Parking
- Large Private Offices w/ W Beautiful Windows
- Open Work Area, Kitchenette, Conference Room and IT Room
- FULL COMMISSION TO LEASING AGENT

OFFERING SUMMARY

Unit 250:	\$20 Gross + Utilities
Available SF:	2,485 Sq Ft

DEMOGRAPHICS	1 MILE	5 MILES	10 MILES
Total Households	795	30,358	88,782
Total Population	2,143	84,898	245,404
Average HH Income	\$122,567	\$101,784	\$114,583



JOE DIMYAN
Broker
 203.313.3920
 jdimyan@towercorp.com



MICHAEL DIMYAN
Broker
 203.948.2891
 mdimyan@towercorp.com

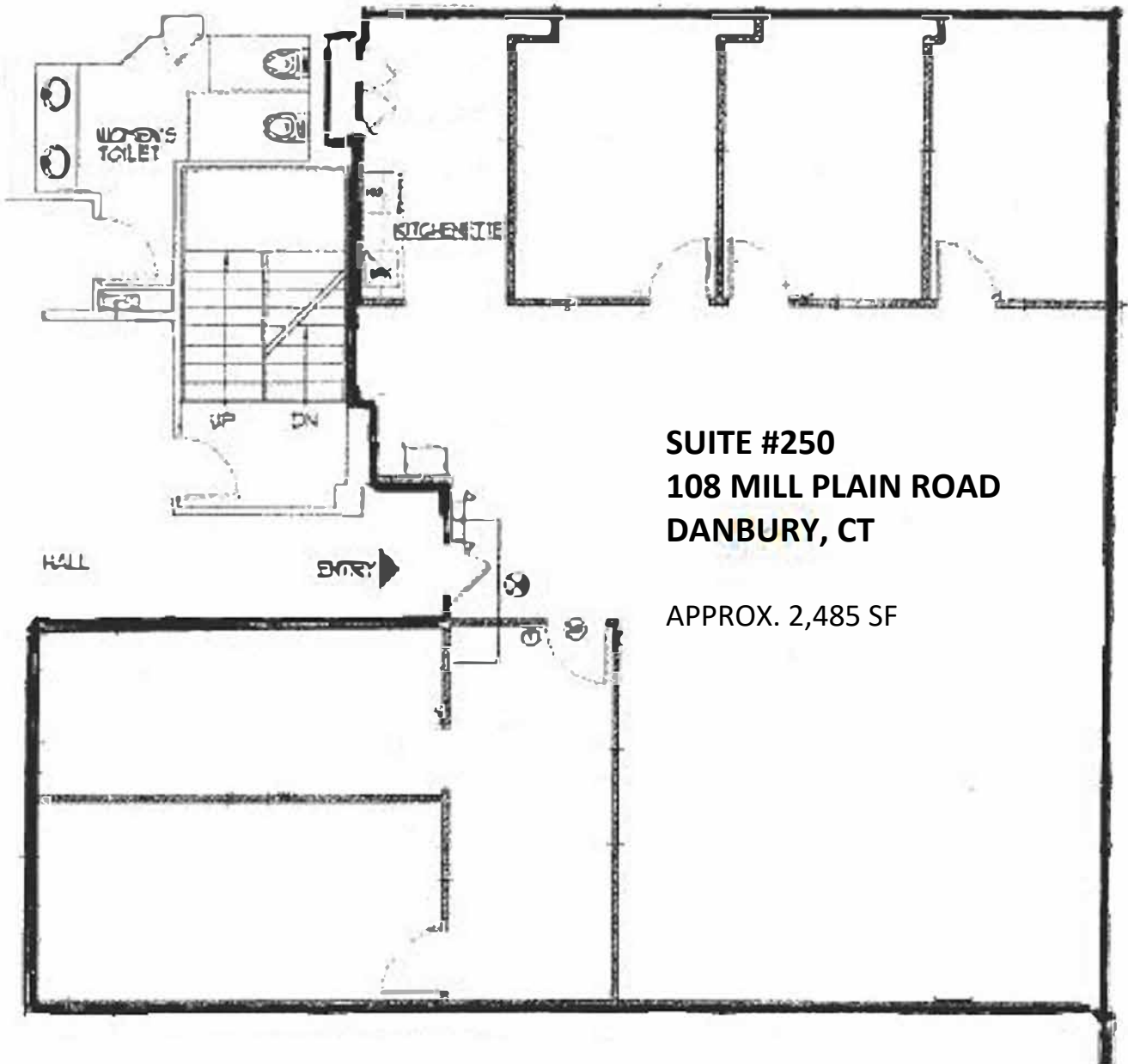
FOR LEASE // 108 MILL PLAIN ROAD, DANBURY CT



JOE DIMYAN
Broker
203.313.3920
jdimyan@towercorp.com



MICHAEL DIMYAN
Broker
203.948.2891
mdimyan@towercorp.com



SUITE #250
108 MILL PLAIN ROAD
DANBURY, CT

APPROX. 2,485 SF

FOR LEASE // 108 MILL PLAIN ROAD, DANBURY CT



Map data © 2021



JOE DIMYAN

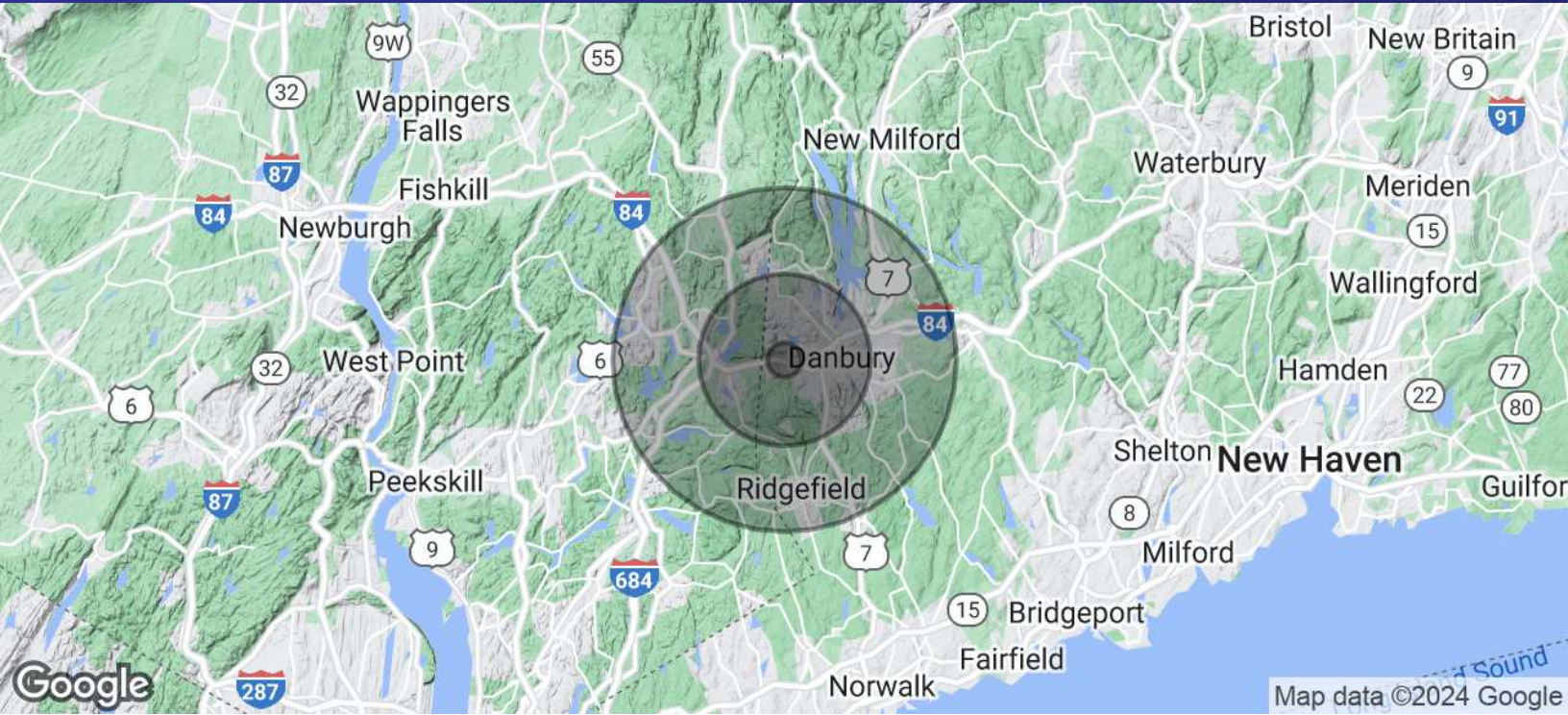
Broker
203.313.3920
jdimyan@towercorp.com



MICHAEL DIMYAN

Broker
203.948.2891
mdimyan@towercorp.com

FOR LEASE // 108 MILL PLAIN ROAD, DANBURY CT



POPULATION	1 MILE	5 MILES	10 MILES
Total Population	2,143	84,898	245,404
Average Age	39.7	38.0	39.5
Average Age (Male)	37.7	37.4	38.5
Average Age (Female)	41.1	38.5	40.4

HOUSEHOLDS & INCOME	1 MILE	5 MILES	10 MILES
Total Households	795	30,358	88,782
# of Persons per HH	2.7	2.8	2.8
Average HH Income	\$122,567	\$101,784	\$114,583
Average House Value	\$433,590	\$466,458	\$469,709

* Demographic data derived from 2020 ACS - US Census



JOE DIMYAN

Broker
203.313.3920
jdimyan@towercorp.com



MICHAEL DIMYAN

Broker
203.948.2891
mdimyan@towercorp.com